



Landscape Notes



By James Downer, Farm Advisor
669 County Square Dr., Suite 100, Ventura, CA 93003-5401 - 805-645-1458

Vol. 19, No. 3

July 26, 2006

Ventura College Offers Horticulture Classes

Our local community college has the following courses offered for this fall. Plant Biology (AGVO3), Tree Management (AGV45), Soil and Water Science (AG VO4) and Conservation of natural Resources (AG V54). Classes in the former horticulture program are being converted to agriculture titles (AG), but the program will still be focused on the large ornamental horticulture industry in Ventura County. All Fall classes still have room. Classes start on August 21. You can register on line at the VCCCD website (<http://students.vcccd.edu/scheds.htm>).

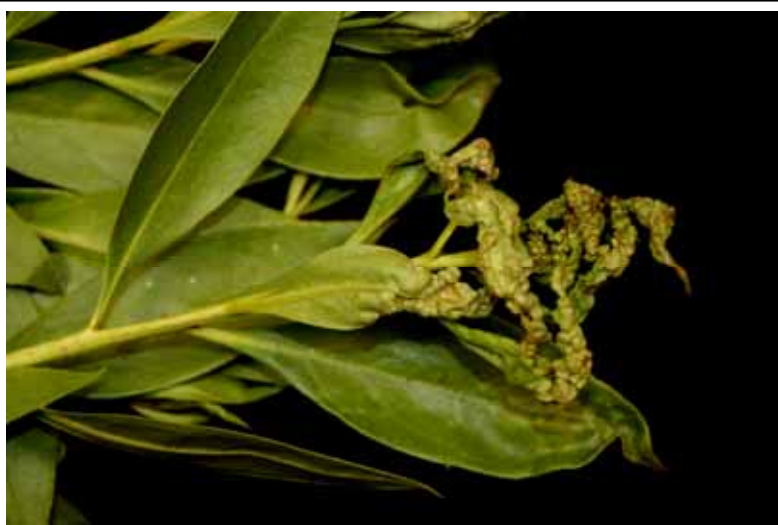
New Thrips Pest Attacks Myoporum

Another bullet proof Australian plant goes down to a new exotic pest. The myoporum thrips is damaging *Myoporum laetum* all over Southern California. The pest causes damage similar to what the Cuban laurel thrips does to *Ficus microcarpa*. The insect is in the genus *Teucothrips* but the species has not been identified yet. So far, the pest has been observed in Los Angeles, Santa Barbara, Orange and Ventura Counties. The new pest is specific to myoporum and has been found on *M. laetum* and *M. pacificum*. The pest is well established where it has been found and will likely pose a rather nasty threat to the aesthetic beauty of myoporum wherever they are grown in California.

The damage is mostly on new growth as feeding of the insect results in hypertrophy and hyperplasia of newly formed leaves resulting in typical thrips related gall-like symptoms.

Thrips are fairly common in California. According to Hoddle (2004), there are over 238 species in 87 genera and eight families listed as found in this state. So here is another one for Dr. Hoddle's list!

Hoddle, M.S., Mound, L.A. and S. Nakahara. 2004. Thysanoptera recorded from California, U.S.A.: A checklist. Florida Entomologist 87:317-323.



Fusarium Wilt Pathogen of *Phoenix canariensis* is a soil survivor

Two years ago as part of an ongoing research program Don Hodel, Dennis Pittenger and I planted 15 gallon *Phoenix canariensis* at South Coast Research and Extension center in Irvine for future trial work. About 1 year later several palms came down with wilt symptoms. About 25% of the palms we planted are now either dead or dying. This was quite a mystery, as we had not pruned and to our knowledge, there were

COOPERATIVE EXTENSION
U.S. DEPARTMENT OF AGRICULTURE
UNIVERSITY OF CALIFORNIA
800 SOUTH VICTORIA AVE., 1 #4941

VENTURA, CA 93003

Official Business
Penalty for Private Use \$300
Return Service Requested

never date palms in this soil. The mystery was solved when I came across some old notes from Dr. Howard Ohr that detailed his inoculation of field grown canary island date palms in 1980 on the same plot of land we planted our palms in. Thus, we now have data that the *Fusarium oxysporum* causing palm wilt can survive **25 years** in soil without a susceptible host present.

Palm Trunk Decays are Definitely in California

Many who have heard my presentations on palm diseases have been challenged to show me a conk on a palm, because I did not believe we had them. Kudos to Tracey Takeuchi (TNT solutions Inc.), she has seen two so far in Coastal California. Her latest find is on *Kentia* (*Howea forsteriana*). The affected tree had declined and most of its leaves had been removed. The fungus is likely *Ganoderma brownii*, but this is not confirmed as we were not able to recover the conk. It is important to find more of these specimens in California so we can document the occurrence of this pathogen on palms. If you ever see anything like this on a palm tree, please give me a call or email (805-645-1458).



Our meetings and trainings are held in handicap accessible facilities. If you have special needs, please call (805) 645-1452.

The University of California prohibits discrimination against or harassment of any person on the basis of race, color, national origin, religion, sex, physical or mental disability, medical condition (cancer-related or genetic characteristics), ancestry, marital status, age, sexual orientation, citizenship, or status as a covered veteran (special disabled veteran, Vietnam-era veteran or any other veteran who served on active duty during a war or in a campaign or expedition for which a campaign badge has been authorized). University Policy is intended to be consistent with the provisions or applicable State and Federal laws. Inquiries regarding the University's non-discrimination policies may be directed to the Affirmative Action/Staff Personnel Services Director, University of California, Agriculture and Natural Resources, 300 Lakeside Dr., 6th Floor, Oakland, CA 94612-3550 (510) 987-0096.

University of California and U.S. Department of Agriculture cooperating